

The Flemington Guide

Flemington, New Jersey

SPECIALTY SHOPS
FACTORY OUTLETS
RESTAURANTS
LODGING
HISTORIC SITES



33



Kustic

*Relax with us. . .
We'll pamper you properly*

LUNCH • DINNER • COCKTAILS

Fresh gourmet seafood,
poultry, beef, veal

**Please call now to reserve
(201) 782-5488
OPEN 7 DAYS**

Seven minutes
from downtown shopping

**For The Perfect Ending
To Your Day**

Your Hosts,

MARTY & JOHANNA PFENNINGER

off Route 12 on
Route 579 in Croton
4½ miles from
Flemington Circle

Where To Stay

39 The BEL-AIR MOTEL
104 luxuriously appointed rooms and suites on spacious, landscaped grounds. Pool. Thermasol steam baths. Voyagers—new restaurant/cocktail lounge open for breakfast, lunch and dinner. Less than a mile from shopping areas and historic sites. Rated *** by AAA. Mobil Travel Guide. V, MC, AE. Open all year. No pets. Reservations suggested. Rts. 202/31 south of the Flemington Circle. 201/782-7472.

40 FLEMINGTON TRAVEL INN MOTEL
New luxury accommodations including family suites. Restaurant, color TV, phones, in-room coffee, pool. One mile from historic Flemington's fine shops and outlets. Quality rated by AAA, Mobil Travel Guide. V, MC, AE. Open-year round. Route 202, 1 mile north of the Flemington Circle. 201/782-2883.

41 JERICA HILL BED AND BREAKFAST
Gracious Victorian home. Five spacious, sunny, antique-filled guest rooms. Fresh flowers, wonderful screened porch. Continental-plus breakfast included. Walk through historic town to shops, fine restaurants and outlets. No smoking please. A warm welcome awaits you at Jerica Hill. 96 Broad Street. For reservations, please call 201/782-8234.

What To Do

42 BLACK RIVER & WESTERN RAILROAD
The BR&W offers rides on an old-time train from mid-April through November. The 11-mile round trip takes one hour with a stop-over at Ringoes to visit the railroad museum, and gift shop, and picnic area. The train departs Flemington at 11:30, 1, 2:30 and 4 on Saturdays, Sundays and holidays, with an expanded schedule in July and August.

43 CINEMA PLAZA
Five first-run movie theatres enhanced by the sculpture of Seward Johnson. Fine shopping, too. Rt. 202/31 just south of the Flemington Circle. 201/782-2777.

44 HUNTERDON THEATRE
First-run movies. One of the most unique theatres in New Jersey, with an interior similar to Radio City Music Hall. Rt. 31 & Church Street. 201/782-4815.

day. World's largest selection of fine crystal, everyday glassware, housewares and fine gifts at reasonable prices. V, MC, AE. 10-5:30 daily. 156 Main Street. 201/782-3017.

15 FRAN JAY/POPKORN-STANGL & DEPRESSION GLASS

Matching Service, Hall, Fiesta, American Dinnerware, trains, toys, post cards, Art Deco, collectibles. 3000 sq. ft. chock full. V, MC. 10-5:30 daily. Rt. 202, one mile north of the Flemington Circle. 201/782-9631.

16 PFALTZGRAFF FACTORY STORE

Save 50% to 70% on Pfaltzgraff seconds. Large selection of glassware, table linens, mugs, gourmet gadgets, cookware, flatware and gifts. V, MC. Open 7 days. Mine Street. 201/782-2918.

17 VILLEROY & BOCH—Broad Street

Elegant European china and beautiful crystal since 1748. Versatile bakeware—microwave safe and freezer-to-oven. Available in the most popular designs, priced right as seconds and discontinued patterns. 40% to 70% off suggested retail price. Bridal registry, UPS shipping available. V, MC, 10-5:30 every day. 114 Broad Street. 201/788-5450. Also visit our second location in Liberty Village. 201/788-5609.

18 WEDGWOOD FLEMINGTON

Direct outlet for Wedgwood, Adams, Midwinter, Johnson Brothers, Franciscan and Coalport. Savings of up to 70% off suggested retail on bone china, earthenware, and ironstone dinnerware, giftware and crystal. V, MC, AE. Bridal Registry. 10-5:30 daily. 110 Broad Street. 201/782-1511.

19 The WILTON ARMETALE® FACTORY OUTLET

Wilton Armetale® brand tableware, giftware, cookware. Save 40% to 60% off suggested retail prices on seconds and closeouts. Armetale metal won't break or crack. Use Armetale in the oven or on the burner. Huge selection. Live sand-molding demonstration. Also Dalia® stainless steel flatware. V, MC. 9:30-5:30 daily. 156 Main Street (at Flemington Cut Glass). 201/782-1574.

Fine Specialty Shops & Galleries

20 BUTCHER BLOCK FACTORY OUTLET

Come see the largest selection of butcher block tables, work tables, specialty carts and counter tops at the lowest prices anywhere! Gourmet housewares and cookware for the chef of the family. V, MC. Mon-Sat 10-6; Sun 11-5. 67-69 Main Street. Parking in rear at Newmarket complex. 201/788-1990. And, a new addition to the growing family—Shop 66, Liberty Village. Lots of butcher block, plus assorted children's fur-

8 POST HORN
A complete selection of fine, classic clothing and accessories for women at reduced prices. The best of new American classics in quality fabrics up to 60% off original prices. V, MC, AE. Mon-Thurs, Sat 10-6; Fri 10-10; Sun 12-5. Cinema Plaza, Rts. 202/31. 201/788-3007.

9 QUODDY FACTORY OUTLET
Quoddy Crafted Footwear. First-quality, in-season footwear for men, women and children at 25% to 50% off suggested retail. Also, slippers, hosiery and handbags—something for the entire family. V, MC, AE, personal checks. Mon-Thurs, Sat 9:30-5:30; Fri. 9:30-8:30; Sun 11-5. Flemington Circle Park, behind Burger King. 201/788-6813.

10 VILLAGE DEB SHOP
Shop in Hunterdon County's largest and finest women's specialty shop now offering first-quality fall and winter fashions from Pendleton, Lanz, Personal, Etienne Aigner, Jody, Alberoy, Schrader Sport, Liz Claiborne, Gunne Sax, Deans, Robert Scott, Bayard Sport, etc. **All at discount prices.** V, MC. Mon-Sat 10-5:30; Sun 1-5:30. 148 Main Street. 201/782-5916.

Tableware & Cookware

11 ASTA/COOKWARE & MORE
Fine European cookware. Direct factory outlet savings of 40% to 70% on decorated enamel-on-steel cookware, stainless steel cookware, porcelain bakeware, linens, woodenware, and English china gift items. Active patterns, discontinued styles, seconds, factory overruns and discontinued packaging. V, MC, shipping. 10-5:30 daily, 112 Broad Street, next door to Villeroy & Boch. 201/782-1735.

12 CORNING FACTORY STORE
Direct factory outlet for Corning Ware[®], Pyrex[®], Corelle[®], and Microwave products. Save 30% to 70% off first-quality and discontinued Corning products. Large selection drinkware, gadgets and tabletop accessories. V, MC. 10-5:30 daily, Friday until 8. Shop 85, Liberty Village. 201/782-1666. Visit our newly expanded store, facing Route 12.

13 DANSK FACTORY OUTLET
Save from 30% to 60% on Dansk's distinguished collection of classic tabletop designs. Buy direct from Dansk and save every day on limited editions, seconds, and discontinued china, cookware, flatware, teak, and crystal gifts—all thoughtfully designed and meticulously made. Open 7 days. Rts. 202/31 at the Flemington Circle. 201/782-7077.

14 FLEMINGTON CUT GLASS
America's oldest manufacturer of cut glass—craftsmen working Monday through Fri-

Where To Shop

Apparel & Accessories

1 Hal Bloodworth's CLOTHING MANSION

Formerly Factory Slack Rack Quality and quantity on hand in this direct outlet for eight men's manufacturers. Large selection of suits, slacks, shirts, and sports coats; also sweaters, ties, belts and a barn full of famous brand men's shoes. V, MC. Weekdays 10-9, Sat 10-5:30, Sun 10:30-5:30. 24 Mine Street. 201/782-0211.

2 Flemington Fur Company's COAT WORLD

A huge selection of fine quality cloth coats, leathers, suedes, imported woolens, cashmeres and all-weather coats. Suits, jackets, exquisite fur hats and "fabulous fakes." A super men's department, too! V, MC. 10-6 daily. Liberty Village. 201/782-3414.

3 FLEMINGTON FUR COMPANY

A truly unique fashion emporium featuring the largest collection of fine-quality furs to be found anywhere. Fur hats and accessories, too. V, MC. 10-6 daily. 8 Spring Street.

4 The FUR EXCHANGE

An exciting collection of carefully selected "pre-owned" furs of superior quality. . . at a fraction of their original cost. V, MC. 10-6 daily. 41 Mine Street.

The KIDS 'TOP

Save up to 50% off every day on 1st quality, fresh, in-season children's clothing. The shop has a complete line of sportswear, girls' dresses and outerwear for girls, sizes NB to 14 and boys' sizes NB to 16. V, MC. Sat - Thurs 10-5:30; Fri 10-8. Shop 63, Liberty Village, 201/782-8052.

LOUIE & LENNY

Elegant women's clothing for the discriminating discount shopper. Unique contemporary apparel in natural fabrics and fresh shapes. Fabulous selection of accessories and talented salespeople to help create a total look make Louie & Lenny a "must see". V, MC. Mon-Sat 10-6; Fri until 8; Sun 11-5. 79 Main Street. 201/788-1942.

MFO DISCOUNT MENSWEAR

A most unusual discounteer, in the menswear business for 62 years, offering exceptional savings on famous brand and designer suits, sport coats, slacks and furnishings. 14-day money back guarantee on any unaltered purchase. V, MC, AE. Mon-Fri 10-9; Sat-Sun 10-6. Flemington Outlet Center, Rts. 202/31. 201/782-8705.

niture, featuring Aprica La Beau strollers. 10-5:30 daily. 201/788-1990.

21 CAROLINA GIFTS—

The Wood & Brass Factory Outlet

Save 40% to 70% every day on quality woodenware and brass accessories by MaLeck, Early American wood decorative accessories, brass, woodenware, ceramic designer accessories and much more. All 1st quality merchandise. 10-5:30 daily, Friday until 8. Shop 43, Liberty Village. 201/788-3790.

22 GRAPHIC IMPRESSIONS

Numbered and signed prints, framed fine art posters from all schools of art. Or choose from 2000 posters in publishers' catalogs. Gift Certificates available. V, MC. Tues-Sun 11-7; Thurs & Fri 11-9. Closed Monday. 39 Mine Street. 201/788-2088.

23 HUNTERDON EXCHANGE

Handmade gifts for all ages. A wide variety of antiques. All proceeds benefit Hunterdon Medical Center. 155 Main Street. 201/782-6229.

24 BRASS & OAK DISCOUNTERS

Large selection of solid oak reproduction roll-top desks, kitchen, dining and bedroom furniture from ten manufacturers. Exclusive factory outlet for solid brass beds and accessories by **Splendor in Brass Ltd.** Selection of reproduction Tiffany shades, prints and quality antique furniture. V, MC and financing. 10-5:30 daily. The Great Freight Station on Stangl Road. 201/788-1891.

25 The SILVER TOUCH FACTORY OUTLET

Featuring Reed & Barton and Sheffield Silver. Save 33 1/3% to 60% off suggested or original prices on silverplate, pewter and brass holloware, stainless flatware, sterling silver baby items and much more! V, MC. 10-5:30 daily. Shop 61, at the tower, Liberty Village. 201/782-1670.

Where To Dine

26 THE BAGELSMITH RESTAURANT & BAGEL BAKERY

The meeting place in Flemington. . .where fine food at modest prices is an everyday occurrence. A varied breakfast and luncheon menu centered around the bagel. A restaurant and deli that accommodates those on the go. . .and those looking for a leisurely meal or snack. Bagels freshly baked on the premises each day. Recommended in New Jersey Monthly. Open 7 days 6:15 a.m.— 4 p.m. Parking in rear. 31 Main Street. 201/782-4800.

**27 BUCKS COUNTRY CAFE/
BUCKS COUNTRY VINEYARDS**

Gourmet salads, home-made soup and daily entree, oversized sandwiches, cheese trays, fresh fruits, pastries and croissants baked daily on premises, fine wines, coffees and espressos—natural foods for the most discerning diner. Wine bar featuring wine and cheese tastings and sales. Wine gift shop. V, MC, AE. 10-5:30 daily. Liberty Village, next to Coat World. 201/782-4405.

**28 DOCKSIDE AT THE
LOBSTER DOCK**

Delight your seafood-loving palate at this fine restaurant and market. Simply prepared seafood, raw clams and oysters, Maine lobsters at all times. Casual atmosphere. Exceptionally affordable. Open 7 days, 11:30 a.m. to 9 p.m. Plaza I on the Circle. 782-2881.

29 FLEMINGTON PONDEROSA

Quick dining for the budget conscious. A wide selection of steaks; also featuring burgers, fish and chicken. Be sure to try a garden-fresh salad from the enormous salad bar. Sun-Thurs 11-9; Fri-Sat 11-10. Rt. 31 and Church Street. 201/788-5556.

30 LA CHAMPAGNE

Personalized service for tourists, business and family luncheons and dinners in a Provincial setting. Highest standard of quality food. Vegetarians and dieters welcome. Lunch from \$3.00. Reservations accepted. BYOB. V, MC, AE, D. Lunch Tues-Sat 11:30-3:15; Light Dinners Tues-Fri 5:30-7:30; Dinner Tues-Fri 5:30-9, Sat 5:30-9:30; Sunday Lunch & Dinner 11:30-4:30. 162 Main Street. 201/782-0655.

**31 MARKET ROOST—
EATERY & FOOD SPECIALTIES**

New Jersey Monthly says "The food here is about as sensational as you're going to find." A unique concept—an eatery/deli/market in the European style. French, German, Italian and Kosher specialties. Gourmet cheese and gift baskets, pastries, breads and croissants baked on the premises, coffee beans and teas. Sit down or take out. Mon-Fri 9:30-6; Sat 10-6; Sun 10:30-5:00. 65 Main Street. 201/788-4949.

32 PFENNINGER'S HILL TOP INN

Gracious family dining in a restaurant that's been delighting its guests for 25 years. Elegant cocktail lounge. Special parties catered. V, MC. Lunch 11:30-2:30; dinner Tues-Thurs 5-8:30, Fri-Sat 5-10; Sunday dinner 12-8:30; closed Monday. Route 202/31 south of the Flemington Circle. 201/782-2924.

33 PFENNINGER'S RUSTIC

Just seven minutes from shopping. Ready to pamper you with over-sized cocktails, fresh

gourmet seafood, plume de veal, poultry, and tender beef entrees. One of Hunterdon's favorite dining and relaxing spots for thirteen years. V, MC, AE. Open daily. Lunch Mon-Fri 12-2:30; dinner Mon-Thurs 5-9; dinner Fri & Sat 5-10; Sunday dinner 2-9. Reservations appreciated. Rt. 579, 3 miles west of Flemington, off Rt. 12. 201/782-5488. **SEE DISPLAY AD.**

34 RAFFLES
Early morning Danish and coffee, Dagwood-sized sandwiches, gourmet provisions, freshly ground coffee, and quality baked goods. Catering available. 9-5:30 daily. Shop 13-14 Turntable Junction. 201/782-8531

35 The VIENNA RESTAURANT
A unique dining experience. Breakfast, lunch and dinner featuring the best in American cuisine plus the best from Vienna—Sauerbraten, Wiener Schnitzel, Hasenpfeffer, Venison and seafood specials. A delicious selection of desserts made daily by the chef. V, MC, AE. Open 7 days a week. 26 Main Street. 201/788-2677.

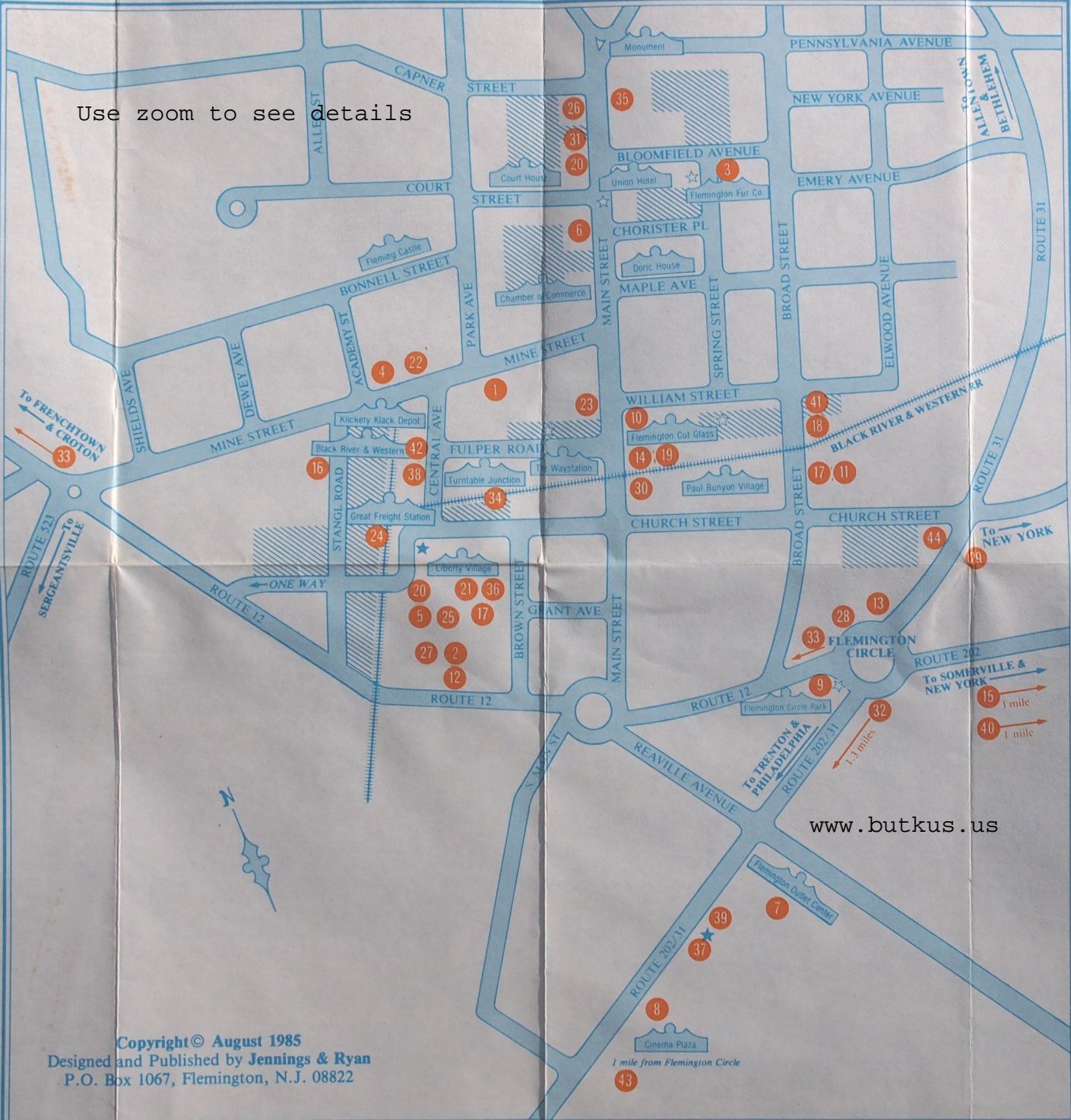
36 The VILLAGE GRILL
A gourmet cafeteria offering a wide selection of entrees for your dining pleasure. Choose from the simple: a jumbo hot dog or hamburger cooked on our open pit; to the heartier: Greek and seafood specialities. Everything is prepared on the premises. Available for private parties and catering. 10-5:30 daily; Friday until 8. Shop 36, Liberty Village. 201-782-4337.

37 VOYAGERS
Dine or just relax over cocktails at Flemington's most sophisticated new restaurant. Select from an extensive wine list and a menu featuring extraordinary appetizers, imaginative salads, homemade soups, and entrees ranging from gourmet burgers to lobster tails. Specializing in fresh seafood. V, MC, AE. Breakfast Mon-Sat 6:30-11:30; Lunch Mon-Sat 11:30-5; Sunday Brunch; Dinner Sun-Thur 5-11, Fri-Sat 5-12. At the Bel-Air Motel, Rts. 202/31 south of the Flemington Circle. 201/788-5228.

38 WEINER DEPOT
Fastest food stop in Flemington. Best hot dogs in town, plus hamburgers, pizza, fish, chicken, salads, french fries, ice cream and milk shakes. Enjoy eating outdoors in warm weather. Located in the heart of the shopping area next to the Black River & Western depot. Open at 10:30 daily. Central Avenue. 201/782-7571.

**For Where To Stay and What To Do listings
—Please Turn—**

Use zoom to see details



www.butkus.us

Copyright © August 1985
Designed and Published by Jennings & Ryan
P.O. Box 1067, Flemington, N.J. 08822

Cinema Plaza
1 mile from Flemington Circle
43

To SOMERVILLE & NEW YORK
15 1 mile
40 1 mile

1.3 miles

HOW TO GET HERE

DIRECTIONS TO FLEMINGTON:

New York

SOUTH on N.J. Turnpike to EXIT 10. NORTH on I-287 (approx. 15 miles) to US 22 WEST. Stay on approx. 3 miles to US 202 SOUTH FLEMINGTON/PRINCETON. Follow US 202 SOUTH TO FLEMINGTON. (About 60 miles total).

Philadelphia

NORTH on I-95 to EXIT 4B PENNINGTON. Follow signs to RT. 31 NORTH, FLEMINGTON. This will take you to the Rt. 31/202 Traffic Circle. (About 60 miles from Center City Philadelphia).

Washington, DC

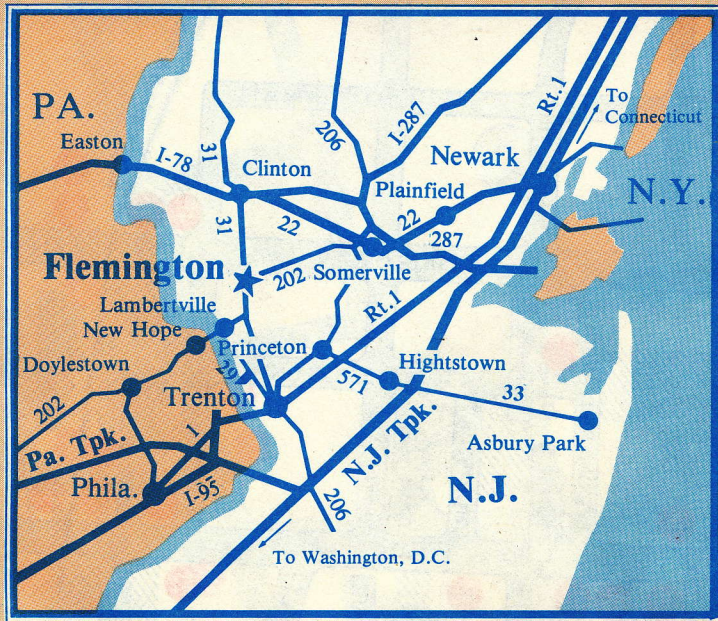
NORTH on I-95 to Delaware Memorial Bridge. Cross bridge. Immediately pick up ROUTE 295 NORTH. Stay on about 50 miles. Take ROUTE 31 NORTH, approx. 25 miles to FLEMINGTON. (About 200 miles total).

Connecticut

I-287 to Tappen Zee Bridge to Garden State Parkway SOUTH to I-80 WEST. Follow I-80 WEST approx. 20 miles to I-287 SOUTH, MORRISTOWN to US 202 SOUTH, SOMERVILLE to FLEMINGTON. (About 100 miles total).

Allentown/Bethlehem/Easton

EAST on I-78 (Rt. 22) across Delaware River toll bridge. EAST on I-78 to ROUTE 31 about 30 miles. Take ROUTE 31 SOUTH to FLEMINGTON. About 40 miles total).



How To Use The Flemington Guide

The Flemington Guide is a directory of selected fine shops and restaurants in the Flemington area. Most business are located from Main Street to Liberty Village and are within a brief walk of each other through Flemington's picturesque streets. Those located off the map are not more than a five-minute drive.

Businesses are listed alphabetically within categories. Each business is briefly described and hours, charge information, address and telephone number are given.

The numbers given with the business descriptions correspond with the numbered drawings on the face of the map. They begin in the upper left corner of the page and continue clockwise. Each business is located on the map itself by these numbers.

The following symbols are used in the legend and are located on the map:



Landmark—These are places of historical or general interest to the visitor in Flemington.



Directory Signs—These signs show location of parking areas and many businesses in town.



N.J. Tourist Information—Offices which have information about individual business and things to do in Flemington as well as other places of interest throughout the state.



Parking

The map is not to scale, and mileage figures are approximate distances from the Flemington Circle.

Most businesses listed in The Flemington Guide are open seven days a week. Personal checks and major credit cards are accepted by most businesses; these are abbreviated as follows: V-Visa, MC-MasterCard, AE-American Express, D-Diners Club. Please check individual listings for specific information about each business. For additional information, contact New Jersey Tourist Information at (201) 788-5729 or the Hunterdon County Chamber of Commerce at (201) 782-5955.

EMERGENCY SERVICES

Dial 911 to report any emergency.
AAA Motor Club: (201) 782-3500.

Welcome To Flemington

Flemington has been a magnet to the people of Hunterdon and surrounding counties since its birth more than 200 years ago and today draws visitors from well beyond the immediate area.

As this guide shows, the Flemington area has many different attractions: history, architecture, entertainment, fine dining, comfortable lodging and—perhaps the strongest attraction of them all—an abundance of fine shopping.

In recent years the number of shops in and around this small, rural town has grown dramatically. Everything from brand-name apparel and fine furs to quality tableware and accessories for the home can be found locally, often at prices substantially below those found elsewhere; for as the number of shops has grown, so has the town's reputation as a center for discount factory outlets.

But the reasons for Flemington's popularity go beyond its status as New Jersey's pre-eminent factory outlet center. No mere shopping center can offer the charm that comes with a visit here, where much of the town has been entered in the federal government's National Register of Historic Places.

The beginnings of that charm can be seen on Bonnell Street where the oldest building in town—Fleming Castle, built in 1756—still serves as a private residence. It can be seen on Main Street at the court house and the Union Hotel where the world watched as Bruno Hauptmann was convicted of the Lingbergh kidnapping. It can be seen on Mine Street where an authentic steam-engine train offers rides, much as its predecessors did a century ago. It can be seen on street after street where there is fine architecture from virtually every period since the 18th Century.

Flemington is more than an opportunity to shop; it is an opportunity to visit with the heritage of smalltown America. If done properly, it can be many trips in one, and it will invite you for many more in the future.

Legend

The following symbols are used in the legend and are located on the map:



Landmark—These are places of historical or general interest to the visitor in Flemington.



Directory Signs—These signs show location of parking areas and many businesses in town.



Parking

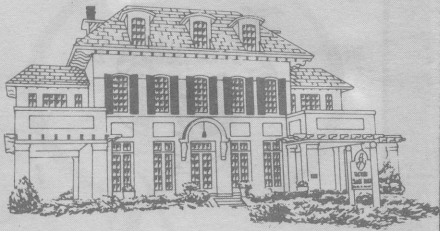


N.J. Tourist Information

The map is not to scale, and mileage figures are approximate distances from the Flemington Circle.

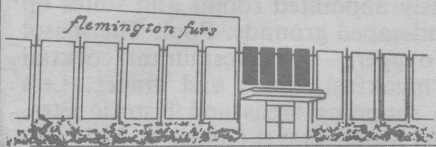
Hal Bloodworth's CLOTHING MANSION

1



FLEMINGTON FUR COMPANY

3



Flemington Fur Company's COAT WORLD

2



The FUR EXCHANGE

4



The KIDS STOP

5



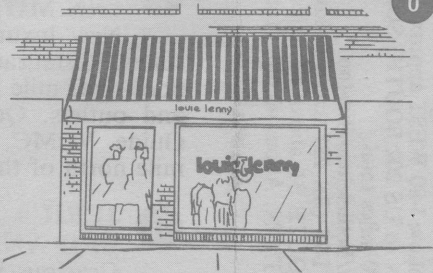
MFO DISCOUNT MENSWEAR

7



LOUIE & LENNY

6



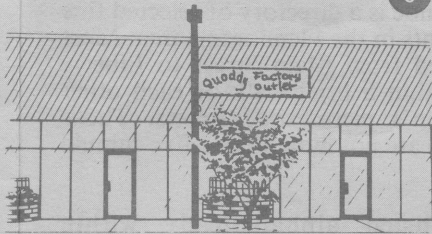
POST HORN

8



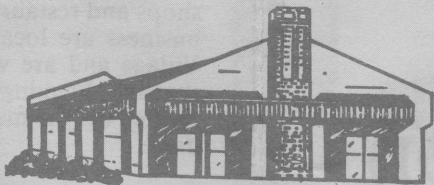
QUODDY FACTORY OUTLET

9



ASTA/COOKWARE & MORE

11



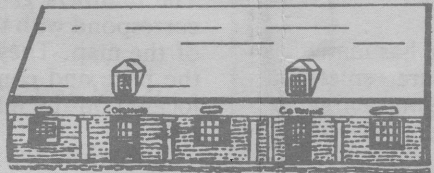
VILLAGE DEB SHOP

10



CORNING FACTORY STORE

12



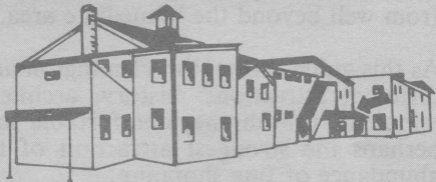
DANSK FACTORY OUTLET

13



FLEMINGTON CUT GLASS

14



**FRAN JAY/POPKORN
STANGL & DEPRESSION
GLASS**

15

FRAN JAY ANTIQUES POPKORN



**PFALTZGRAFF
FACTORY STORE**

16



VILLEROY & BOCH

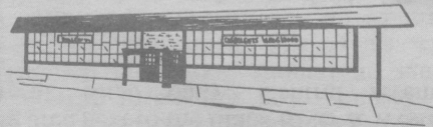
—Broad Street

17



WEDGWOOD FLEMINGTON

18



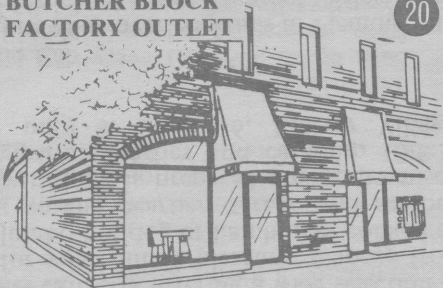
**The WILTON ARMETALE®
FACTORY OUTLET**

19



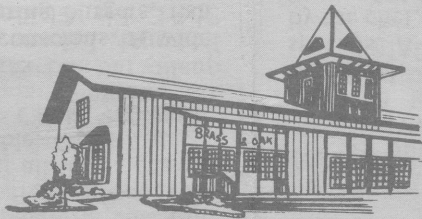
**BUTCHER BLOCK
FACTORY OUTLET**

20



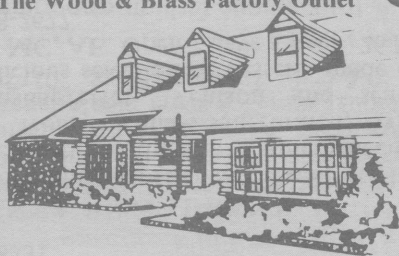
BRASS & OAK DISCOUNTERS

24



CAROLINA GIFTS— The Wood & Brass Factory Outlet

21



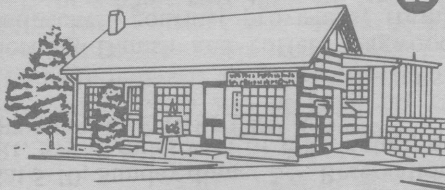
HUNTERDON EXCHANGE

23



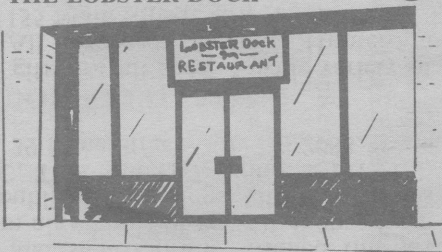
GRAPHIC IMPRESSIONS

22



**DOCKSIDE AT
THE LOBSTER DOCK**

28



**THE BAGELSMITH
RESTAURANT
& BAGEL BAKERY**

26



**BUCKS COUNTRY CAFE
BUCKS COUNTRY VINEYARDS**

27



**The SILVER TOUCH
FACTORY OUTLET**

25



34

PFENNINGER'S HILL TOP INN



32

LA CHAMPAGNE



30

33

**MARKET ROOST—
Eatery & Food Specialties**


31

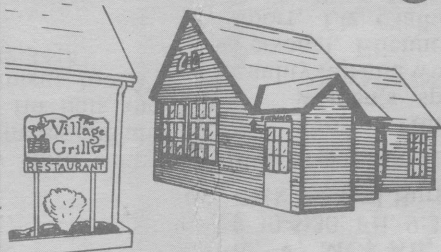
FLEMINGTON PONDEROSA



29

The VILLAGE GRILL

36



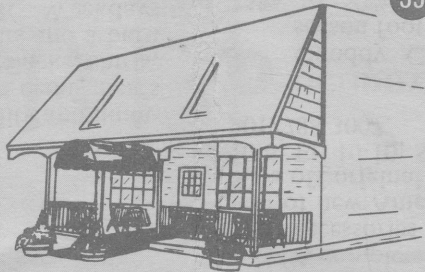
RAFFLES

34



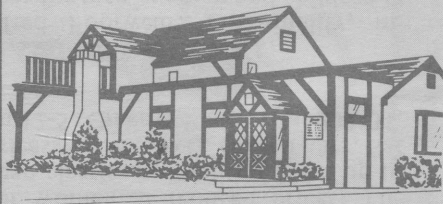
The VIENNA RESTAURANT

35



PFENNINGER'S RUSTIC

33



WEINER DEPOT

38



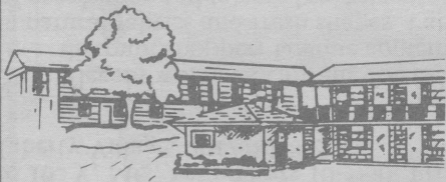
VOYAGERS

37



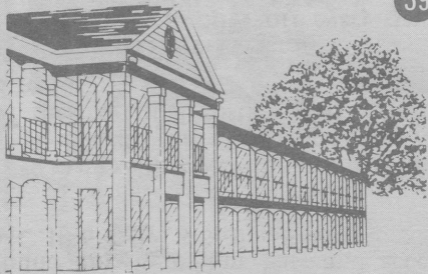
**FLEMINGTON
TRAVEL INN MOTEL**

40



The BEL-AIR MOTEL

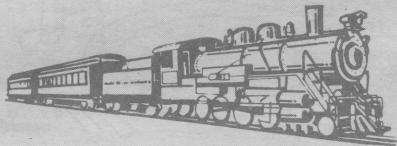
39



WEINER DEPOT

BLACK RIVER & WESTERN RAILROAD

42



JERICA HILL BED AND BREAKFAST

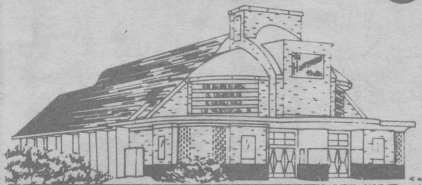
41



www.butkus.us

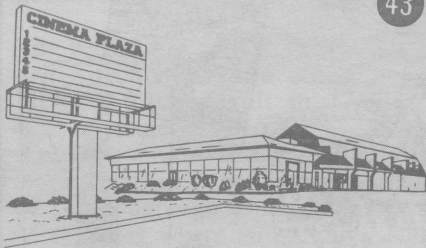
HUNTERDON THEATRE

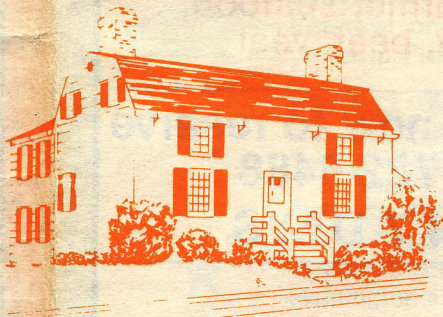
44



CINEMA PLAZA

43





FLEMING CASTLE

Small by more modern standards, Fleming Castle was impressive for its time and place. It was built in 1756 by Samuel Fleming, and first served as an inn and tavern. Though it cannot be documented, it is said that George Washington stopped occasionally and that even Martha paid a visit. Now a private residence owned and maintained by the Daughters of the American Revolution, it is the oldest house in town.



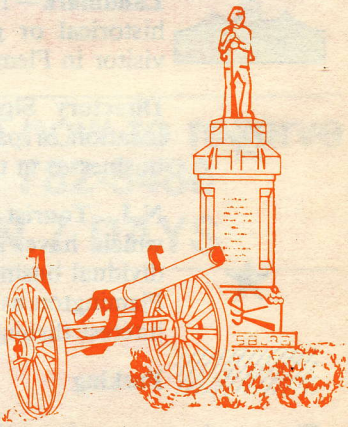
THE COURT HOUSE

Though Hunterdon County's seat has been at Flemington since 1785, the current court house wasn't built until 1828, as a replacement for one razed by fire. Before it could be built, however, the town was forced to defeat nearby Lambertville's attempt to replace it as the new county seat. Flemington's first Greek Revival-style building, the court house was a focal point for world attention in 1935 as the place where Bruno Hauptmann was tried and convicted of kidnapping the Lindbergh baby.



DORIC HOUSE

Built in 1846, the Doric House is named after its prominent Doric-style columns. This impressive example of Greek Revival architecture, designed by architect Mahlon Fisher to be his home, is now home for the Hunterdon County Historical Society. A miniature replica, the Southard House, can be found farther north along Main Street, on the opposite side.



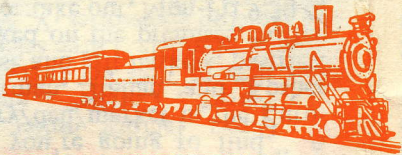
CIVIL WAR MONUMENT

A life-size Union soldier has stood for nearly a century at the intersection of East Main Street and North Main Street as "Flemington's grateful tribute to the self-sacrificing valor of her loyal sons..." Symbolically, the monument faces where the two streets become one Main Street, much as the Union and Confederacy became one after the Civil war.



The UNION HOTEL

With its mansard roof and dormer windows, the Union Hotel as it now appears has been standing since 1877, although there has been a hotel on the site since at least 1814. It was a hub of activity in 1935 when it was host to scores of journalists covering the Lindbergh kidnap trial. No longer offering lodging, the hotel has a busy dining room that features a continuous, floor-to-ceiling mural painted during the Depression by an unknown, local artist.



BLACK RIVER & WESTERN RAILROAD

Like most small towns in America, Flemington does not have the train service it once did. At its peak, in the 1920's, three lines reportedly served the borough with 20 trains a day. Unlike most small towns, however, Flemington can still boast of its own railroad, complete with open-air coaches. The Black River & Western Railroad offers rides between Flemington and nearby Ringoes from mid-April through November; on Sundays there are connecting trains to Lambertville.